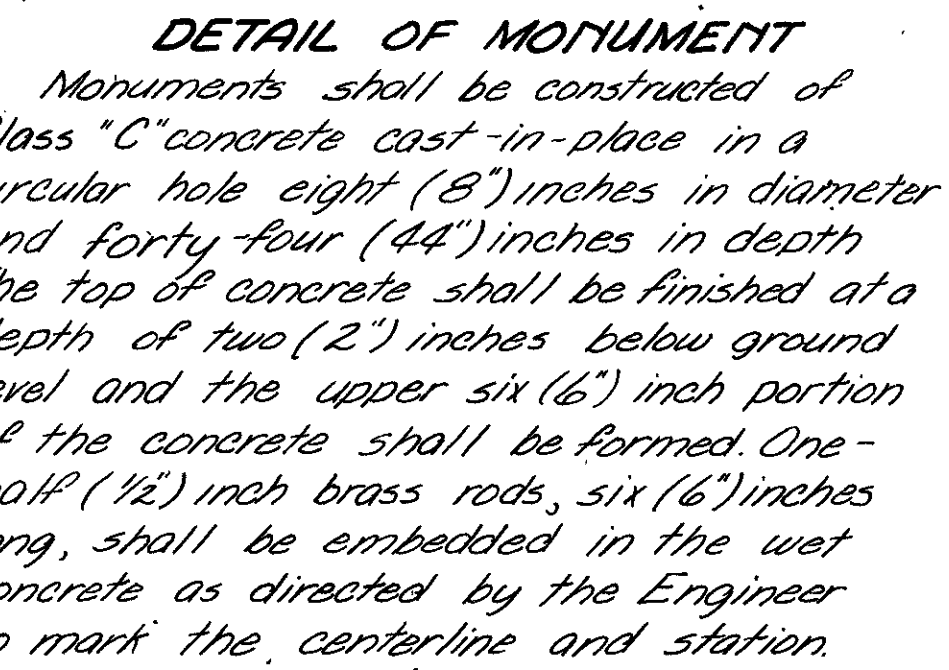
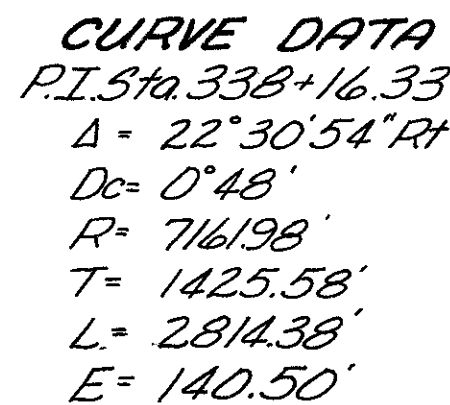
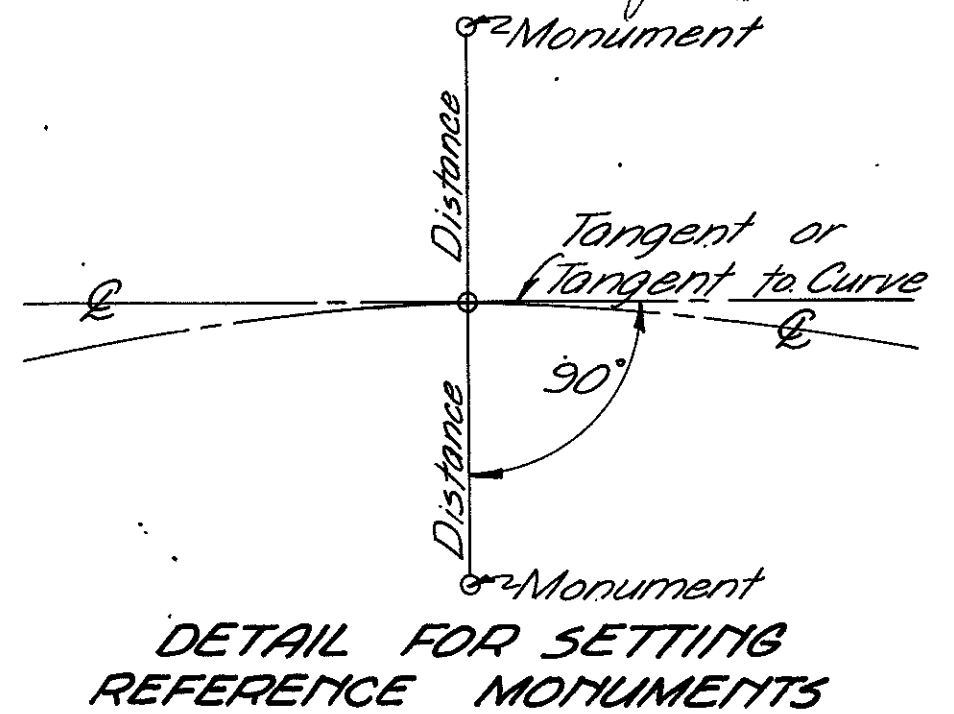


PLAT Book 15

Page 132



0 500 1000 1500 2000
SCALE IN FEET



MONUMENTS TO BE PLACED AFTER CONSTRUCTION											
Station	Dist L/E	Dist R/E	Station	Dist L/E	Dist R/E	Station	Dist L/E	Dist R/E	Station	Dist L/E	Dist R/E
323+90.75	24	24	362+0	24	24	394+43.71	24	24	430+0	24	24
328+0	24	24	366+30.62	24	24	399+0	24	24	434+0	24	24
333+0	24	24	371+0	24	24	403+48.05	24	24	437+54.72	24	24
338+0	24	24	375+0	24	24	405+48.05	24	24	439+54.72	24	24
343+0	24	24	378+43.71	24	24	410+0	24	24	441+0	24	24
348+0	24	24	381+43.71	24	24	415+0	24	24			
352+05.13	24	24	386+50	24	24	420+0	24	24			
357+0	24	24	391+43.71	24	24	425+0	24	24			

I-8 Monument Assemblies 58 Each

Elmer S. Barrett Date: 7-1-59
ELMER S. BARRETT P.E. #6937, Registered
Surveyor # 2890

This plan recorded in the Muskingum
County Record of Plats, Book: 15 Page: 12 Date: 1-17-93

	3/26/62	AS CONSTRUCTED	H.F.K.
REVISION	DATE	DESCRIPTION	BY
<p align="center">U. S. ARMY ENGINEER DISTRICT, HUNTINGTON CORPS OF ENGINEERS HUNTINGTON, W. VA.</p>			
DRAWN BY: <i>REJ</i> TRACED BY: <i>LLF</i> CHECKED BY: <i>SPW</i> SUBMITTED BY: <i>Elmer S. Barrett</i> ELMER S. BARRETT ASSOCIATES RECOMMENDED: <i>John B. Johnson</i> CHIEF ENG. DIV.		<p align="center"> LICKING RIVER DILLON RESERVOIR PROJECT RELOCATION OF OHIO STATE ROUTE NO. 146 (Section 3) </p>	
APPROVED: <i>Steven Malerich</i> COL. C.E. DISTRICT ENGINEER		DATE: NOV. 1959	
ELMER S. BARRETT ASSOCIATES CONSULTING ENGINEERS CHILLICOTHE, OHIO		SCALE: 1" = 500' DRAWING NUMBER 027f-UD7 - 68/86 SHEET 86 OF 92	

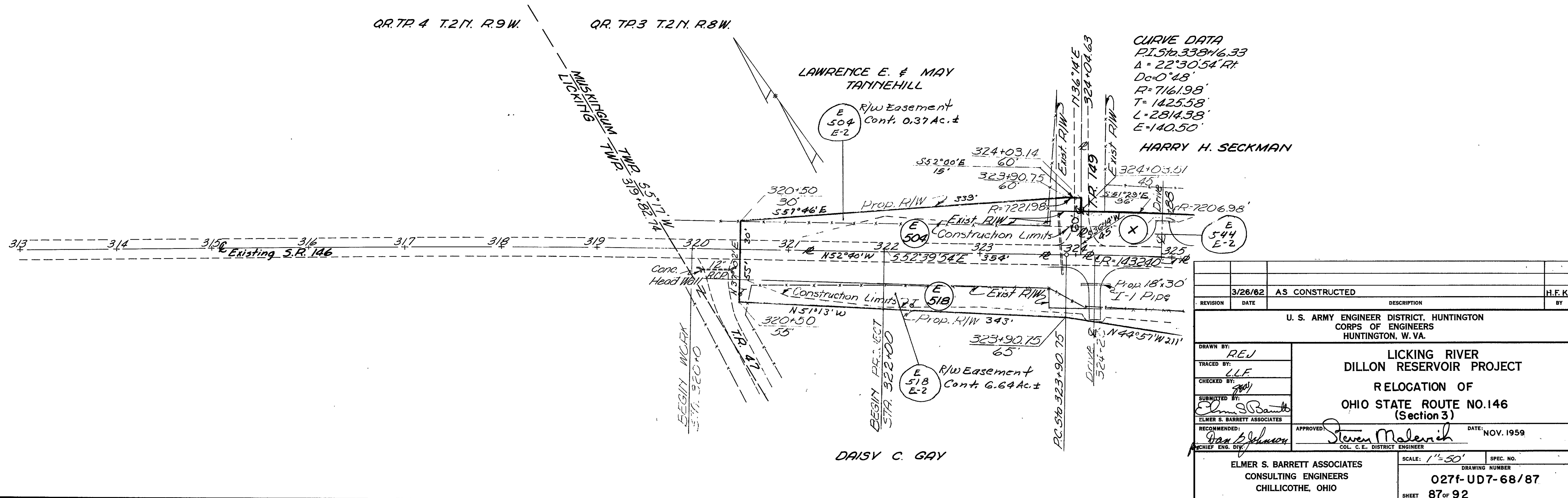
MUSKINGUM COUNTY
MUS-146-6.09
R/W PLAN

SUMMARY OF R/W REQUIRED

PARCEL	SUBDIVISION OR LOT NO.	OWNER OF RECORD	VOL. PAGE	SH. NO.	Exist. Bldg.	AREA	OTHER
E-504	QR TP 3, T.21N. R.8W.	LAWRENCE E. & MAY TANNENHILL	DB 491 PG. 444		87	123 Ac.	P.R.O. = 279 Ac.
E-518		DAISY C. GAY	DB 499 PG. 379	See Note	87-89	11194 Ac.	Note: Will Book 44, Page 125, W.A.s required to fill old road lt. of Sta. 330 & to grade ditch rt. of Sta. 332
E-515-1		CHARLES L. ARMINE	DB 491 PG. 247	249	96	88	397 Ac. Also Will Book 28, Page 355
E-515-2			DB 491 PG. 247	249	96	88, 89	5567 Ac. Also Will Book 28, Page 355 Work Agreement required to construct drive left of Sta. 352
E-516	QR TP 3, T.21N. R.8W.	WALTER GORDON KINNEY	DB 491 PG. 457	281	472	89	2465 Ac.
E-547	QR TP 2, T.11N. R.8W.	RAY L. & JUNE I. TALLEY	DB 496 PG. 452	315	70	89, 90	8879 Ac. Also Vol. 347, Page 469 Work Agreement required to construct drive left of Sta. 375
E-548		FLOYD O. SMITH ET. UX.	DB 491 PG. 134	315	253	90	2523 Ac.
E-549		THE MUSKINGUM VALLEY FISHERMAN'S ASSOCIATION	DB 491 PG. 134	315	253	90	2523 Ac. Work Agreement required to construct drive left of Sta. 393 DB 493 PG. 226
E-550		JOSEPHINE U. OWENS	DB 487 PG. 693	451	105	91	4426 Ac.
E-551-1		NOTA HALLACK	DB 492 PG. 681	366	70	91	4551 Ac.
E-553		STUART W. & HELEN WILSON	DB 486 PG. 631	440	179	91	1399 Ac.
E-551-2		NOTA HALLACK	DB 492 PG. 681	366	70	91, 92	1699 Ac.
E-554		JAMES & MAXINE REEVES	DB 489 PG. 347	379	236	92	Yes
E-558-1		HEBERT T. MARSHALL & EDNA M. DORSEY	DB 492 PG. 681	See Note	92	240 Ac.	Note: Will Book 20, Page 465 & Vol. 304, Page 358 & Will Book 46, Page 20 . P.R.O. = 195 Ac.
E-558-2			DB 492 PG. 681	See Note	92	1446 Ac.	Note: Will Book 20, Page 465 & Vol. 304, Page 358 & Will Book 46, Page 20 . P.R.O. = 617 Ac.
E-555		OLIVE RUSH	DB 488 PG. 51	281	234	92	Yes
A-135	QR TP 2, T.11N. R.8W.	ALICE MARSHALL ET. AL.	DB 475 PG. 666	250	461	92	1298 Ac. Also Vol. 250, Page 462. P.R.O. = 893 Ac.
X	QR TP 3, T.21N. R.8W.	HARRY H. SECKMAN	DB 492 PG. 299	486	3	87, 88	.049 Ac. P.R.O. = 355 Ac., Also Vol. 486, Page 615 W.A. required to grade left of E.

* Areas are exclusive of Present Road Occupation.

Note:
Item 2 is Recorded in Vol. 619 Pg. 87
A135E-1, E504E-2, E515E-3, E518E-2,
E544E-2, E547E-3, E548E-2 & E549E-2
Are Recorded in Vol 619 Pg. 107.
United States of America To the State of Ohio



WORK AS CONSTRUCTED

RIGHT-OF-WAY PLAN

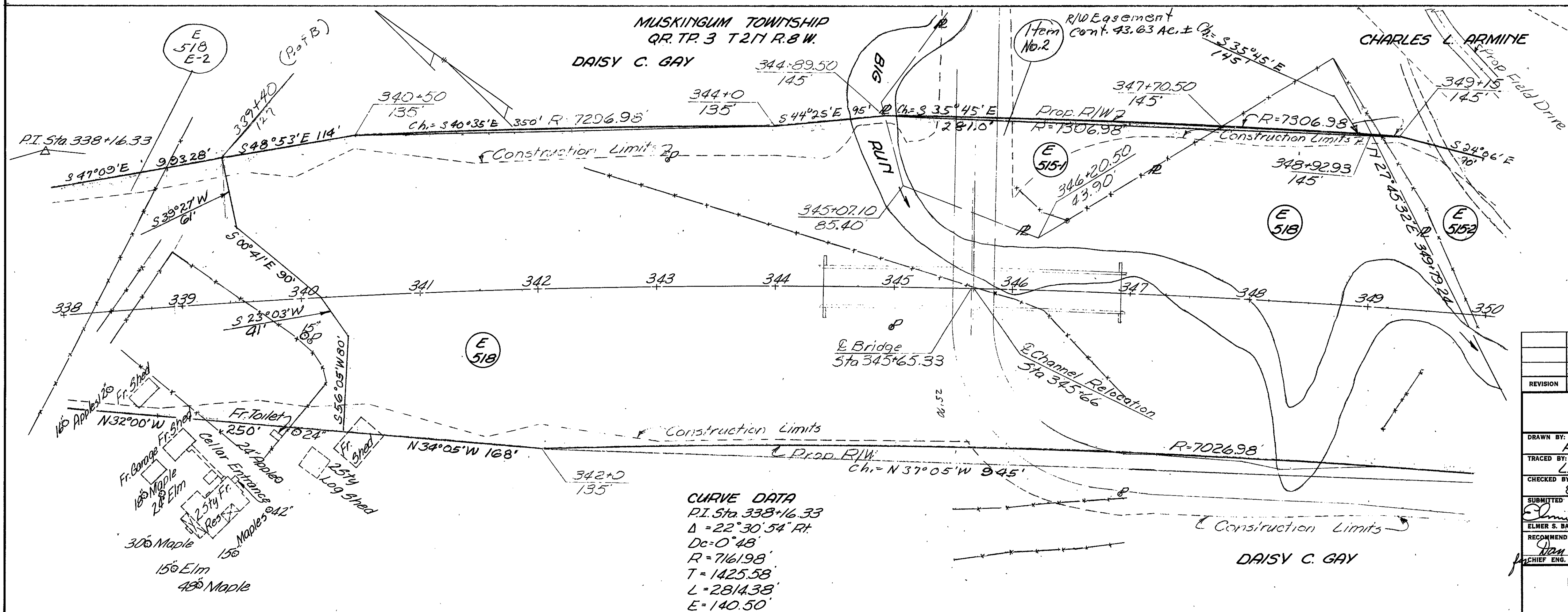
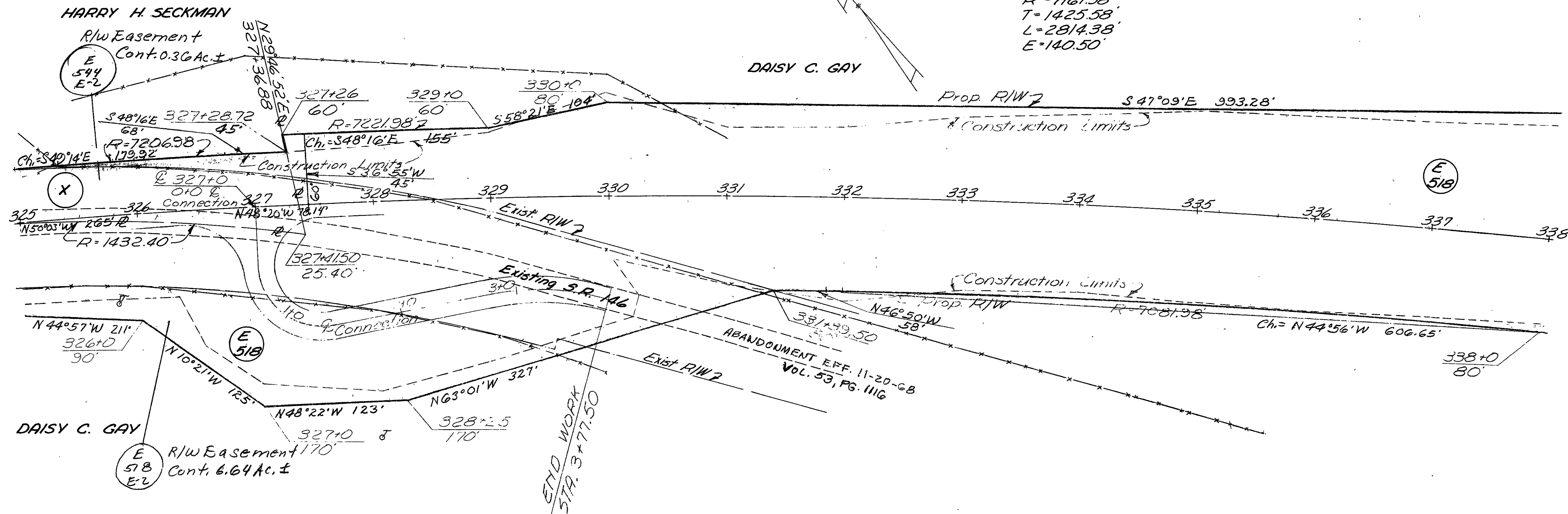
STA. 313+00 TO STA. 325+00

MUSKINGUM TOWNSHIP
QR. TR. 3 T. 2 N. R. 8 W.

CURVE DATA
PI Sta. 338+16.33
 $\Delta = 22^\circ 30' 54''$
 $D_c = 0' 48''$
 $R = 7161.98'$
 $T = 1425.58'$
 $L = 2814.38'$
 $E = 140.50'$

FED. RD. DIVISION	STATE	PROJECT	
2	OHIO		

MUSKINGUM COUNTY
MUS-146-6.09
R/W PLAN



REVISION	DATE	DESCRIPTION	BY
	3/26/62	AS CONSTRUCTED	H.F.K.

U. S. ARMY ENGINEER DISTRICT, HUNTINGTON
CORPS OF ENGINEERS
HUNTINGTON, W. VA.

DRAWN BY: REJ
TRACED BY: LLE
CHECKED BY: 804
SUBMITTED BY: Elmer S. Barrett
ELMER S. BARRETT ASSOCIATES
RECOMMENDED BY: Dan B. Johnson
CHIEF ENG. DIST.

APPROVED: Steven Malenich
COL. C. E. DISTRICT ENGINEER

DATE: NOV. 1959

ELMER S. BARRETT ASSOCIATES
CONSULTING ENGINEERS
CHILLICOTHE, OHIO

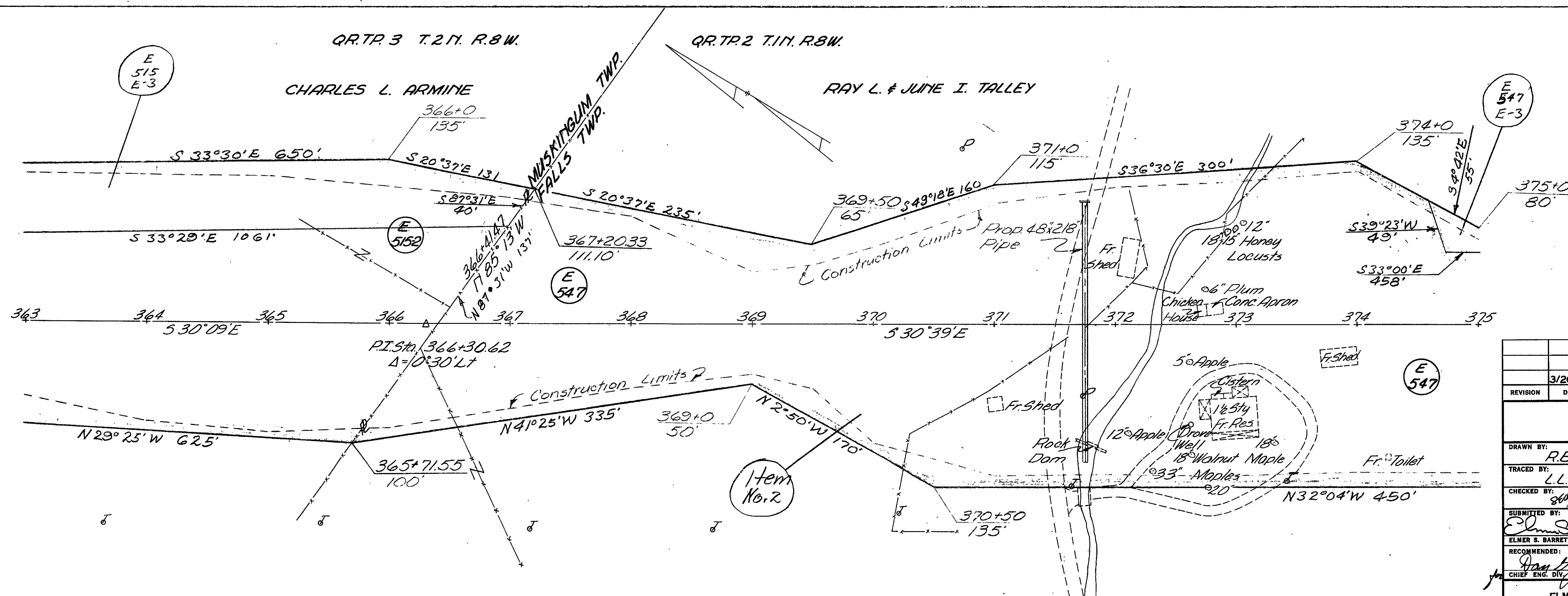
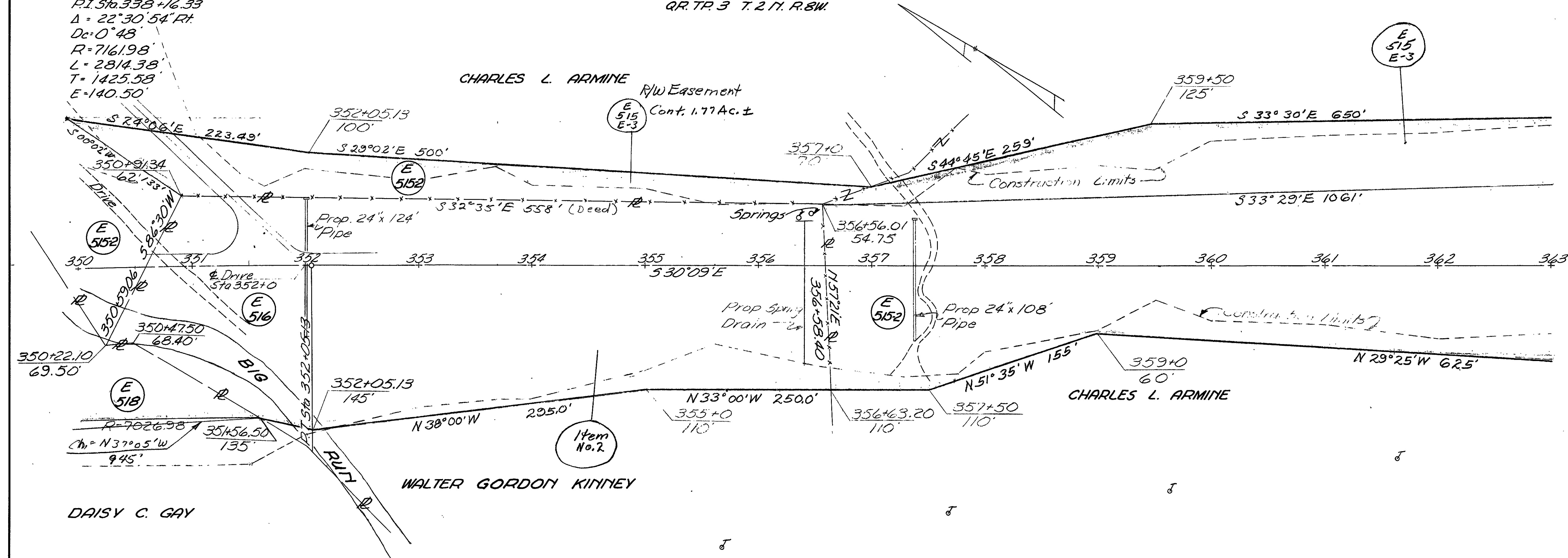
SCALE: 1"=50'
DRAWING NUMBER
027f-UD7-68/88
SHEET 88 OF 92

CURVE DATA
 P.I. Sta. 338+16.33
 $\Delta = 22^\circ 30' 54''$ Rt.
 $Dc = 0' 48''$
 $R = 7161.98'$
 $L = 2814.38'$
 $T = 1425.58'$
 $E = 140.50'$

MUSKINGUM TOWNSHIP
 Q.R. TR. 3 T. 2 N. R. 8 W.

FED. RD. DIVISION	STATE	PROJECT	
2	OHIO		89 92

MUSKINGUM COUNTY
 MUS -146 -6.09
 R/W PLAN



REVISION	DATE	DESCRIPTION	BY
	3/26/62	AS CONSTRUCTED	H.F.K.

U. S. ARMY ENGINEER DISTRICT, HUNTINGTON
 CORPS OF ENGINEERS
 HUNTINGTON, W. VA.

**LICKING RIVER
 DILLON RESERVOIR PROJECT**

**RELOCATION OF
 OHIO STATE ROUTE NO. 146
 (Section 3)**

DATE: NOV. 1959

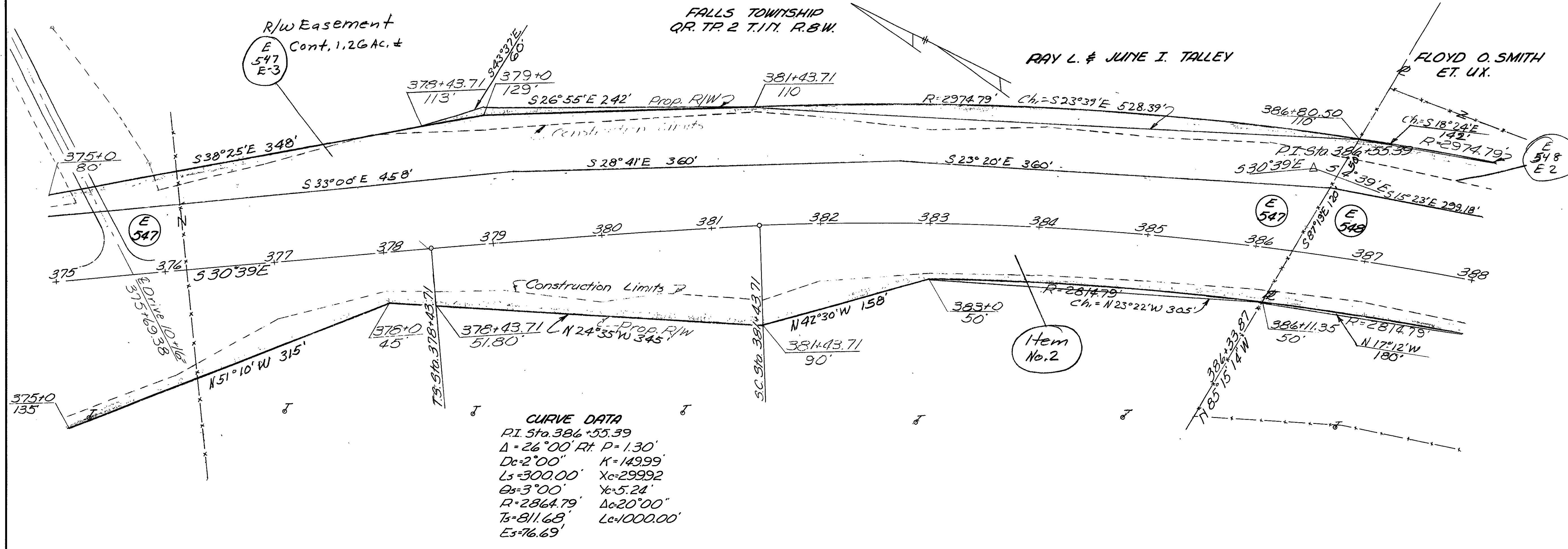
APPROVED: *Steven Malenich*
 COL. C.E. DISTRICT ENGINEER

ELMER S. BARRETT ASSOCIATES
 CONSULTING ENGINEERS
 CHILLICOTHE, OHIO

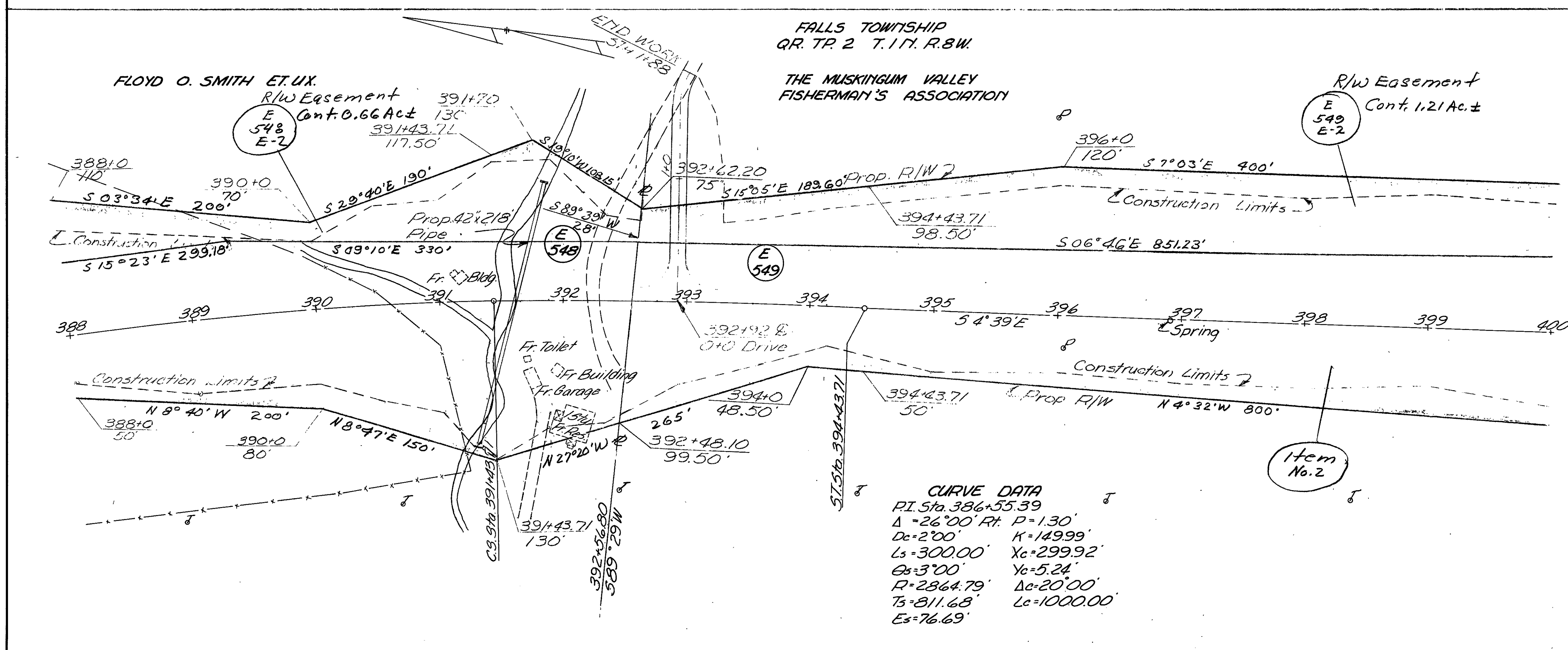
SCALE: 1" = 50'
 DRAWING NUMBER
 027f-UD7-68/89
 SHEET 89 OF 92

WORK AS CONSTRUCTED **RIGHT-OF-WAY PLAN** STA. 350+00 TO STA. 375+00

MUSKINGUM COUNTY
MUS - 146 - 6.09
R/W PLAN



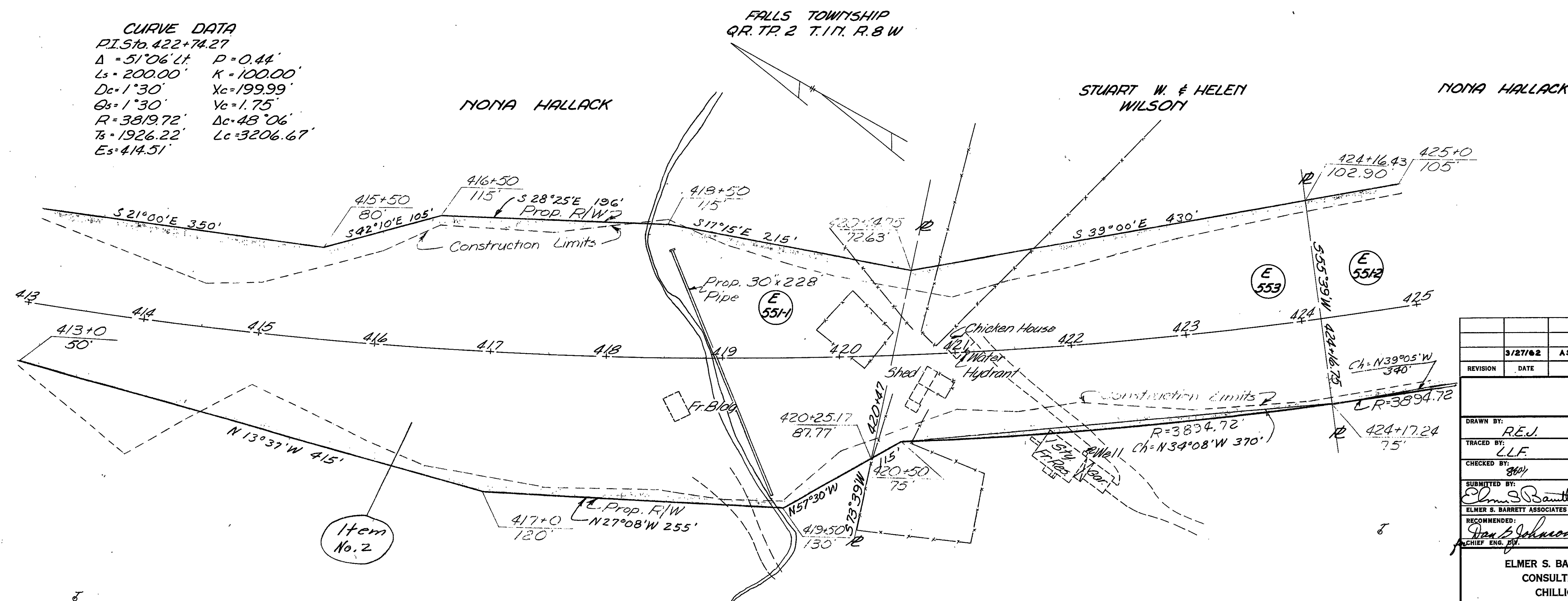
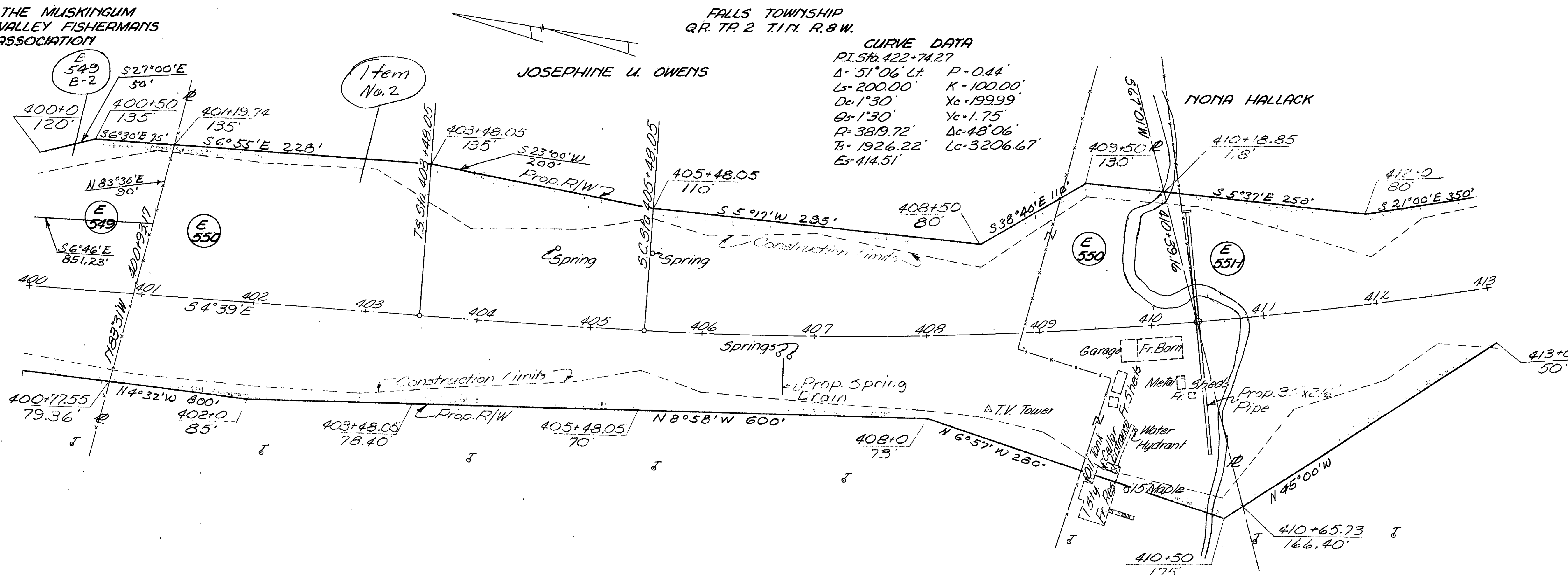
CURVE DATA
PI Sta. 386+55.39
Δ=26°00' Rt. P=1.30'
Dc=2'00" K=149.99
Ls=300.00' Xc=299.92
Es=76.69' Lc=1000.00'
Ts=811.68' Δc=20°00'
R=2864.79' Yc=5.24'



CURVE DATA
PI Sta. 386+55.39
Δ=26°00' Rt. P=1.30'
Dc=2'00" K=149.99
Ls=300.00' Xc=299.92
Es=76.69' Lc=1000.00'
Ts=811.68' Δc=20°00'
R=2864.79' Yc=5.24'

3/27/62	AS CONSTRUCTED	H.F.K.
REVISION	DATE	DESCRIPTION
U. S. ARMY ENGINEER DISTRICT, HUNTINGTON CORPS OF ENGINEERS HUNTINGTON, W. VA.		
DRAWN BY: REJ TRACED BY: L.L.F. CHECKED BY: gwh SUBMITTED BY: Elmer S. Barrett Associates RECOMMENDED BY: John B. Johnson APPROVED: Steven Malench COL. C.E. DISTRICT ENGINEER		
LICKING RIVER DILLON RESERVOIR PROJECT RELOCATION OF OHIO STATE ROUTE NO.146 (Section 3)		
DATE: NOV. 1959		
ELMER S. BARRETT ASSOCIATES CONSULTING ENGINEERS CHILLICOTHE, OHIO		
SCALE: 1" = 50' DRAWING NUMBER: 027f-UD7- 68/90 SHEET 90 of 92		

MUSKINGUM COUNTY
MUS - 146 - 6.09
R/W PLAT



3/27/62		AS CONSTRUCTED		H.F.K.	
REVISION	DATE	DESCRIPTION			BY
U. S. ARMY ENGINEER DISTRICT, HUNTINGTON CORPS OF ENGINEERS HUNTINGTON, W. VA.					
DRAWN BY: R.E.J.		LICKING RIVER DILLON RESERVOIR PROJECT RELOCATION OF OHIO STATE ROUTE NO. 146 (Section 3)			
TRACED BY: L.L.F.					
CHECKED BY: 8601					
SUBMITTED BY: Elmer S. Barrett Associates					
RECOMMENDED BY: Elmer S. Barrett Associates		APPROVED: Steven Malenich		DATE: NOV. 1959	
CHIEF ENG. DIV.		COL. C.E. DISTRICT ENGINEER			
ELMER S. BARRETT ASSOCIATES CONSULTING ENGINEERS CHILLICOTHE, OHIO				SCALE: 1" = 50' SPEC. NO. DRAWING NUMBER 027f-UD7- 68/91 SHEET 91 OF 92	

WORK AS CONSTRUCTED

RIGHT-OF-WAY PLAN

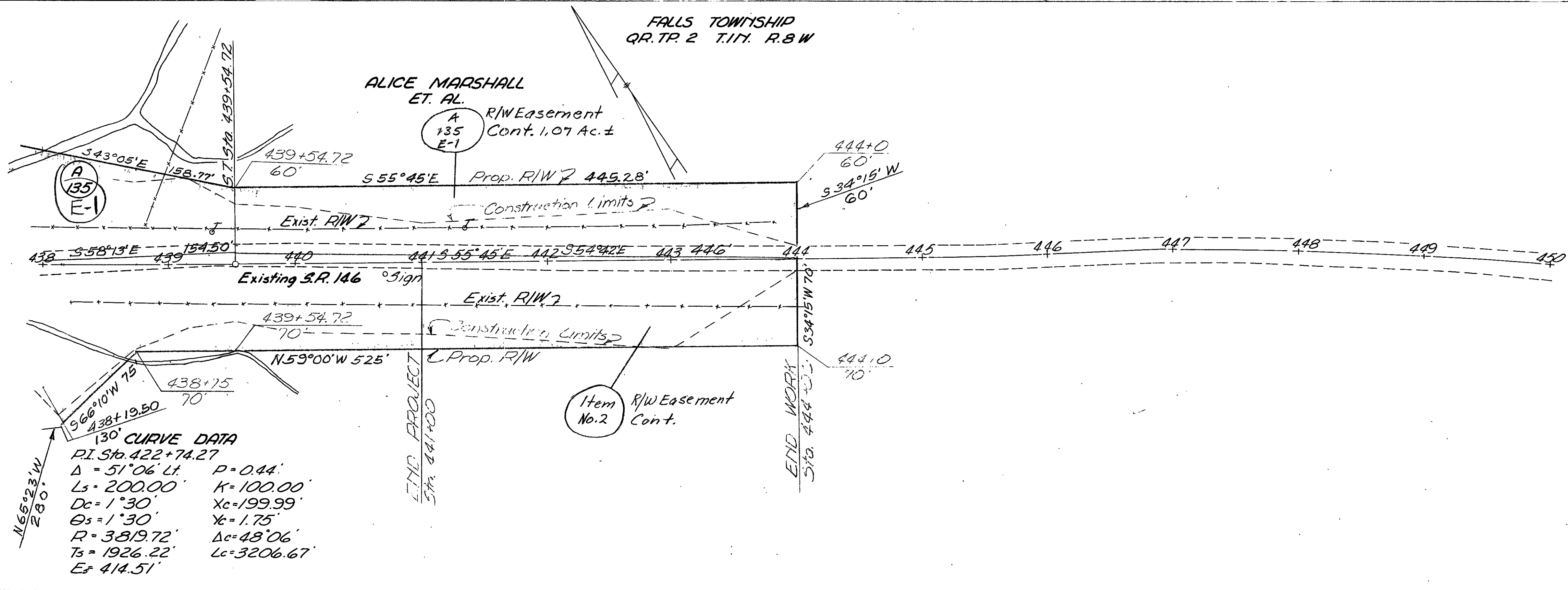
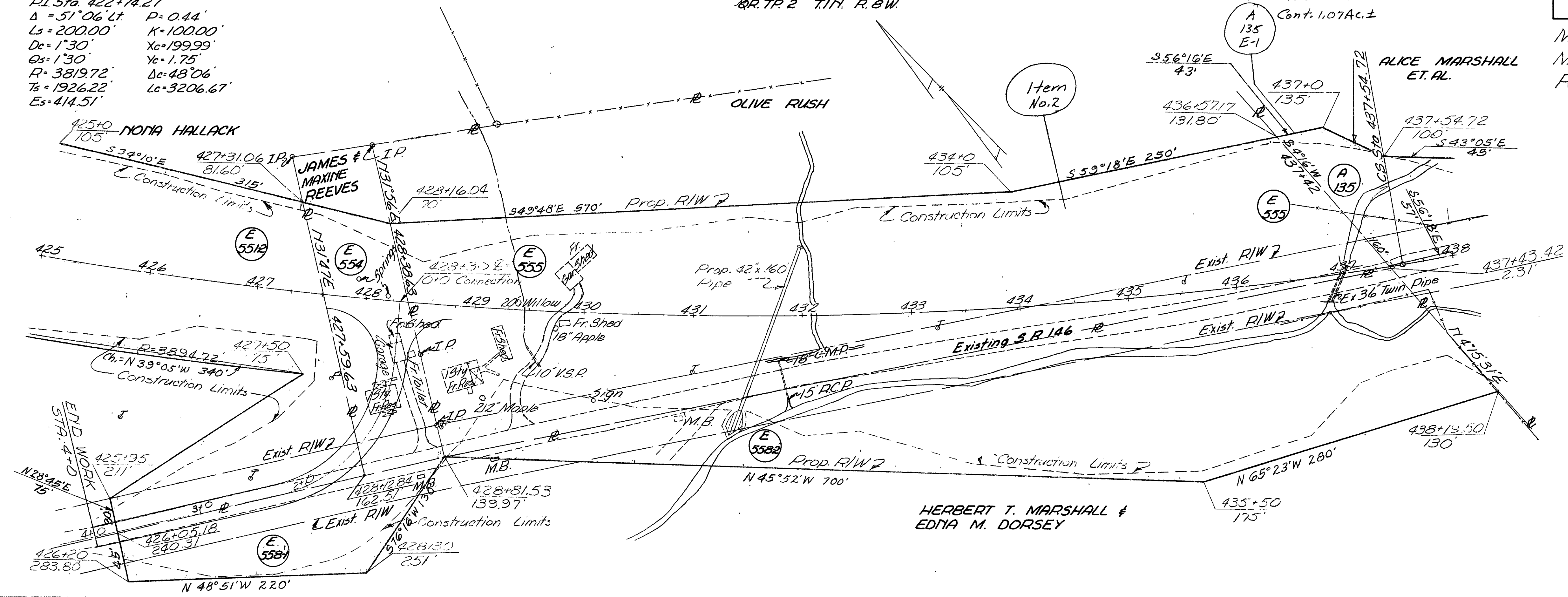
STA. 400+00 TO STA. 425+00

CURVE DATA
 P.I. Sta. 422+74.27
 $\Delta = 51^{\circ}06'Lt$ $P = 0.44'$
 $Ls = 200.00'$ $K = 100.00'$
 $Dc = 1^{\circ}30'$ $Xc = 199.99'$
 $Os = 1^{\circ}30'$ $Yc = 1.75'$
 $R = 3819.72'$ $\Delta c = 48^{\circ}06'$
 $Ts = 1926.22'$ $Lc = 3206.67'$
 $Es = 414.51'$

FALLS TOWNSHIP
 Q.R. TR. 2 T.11N. R.8W.

FED. RD. DIVISION	STATE	PROJECT	
2	OHIO		

MUSKINGUM COUNTY
 MUS -146-6.09
 R/W PLAN



3/27/62		AS CONSTRUCTED	H.F.K.
REVISION	DATE	DESCRIPTION	BY
U. S. ARMY ENGINEER DISTRICT, HUNTINGTON CORPS OF ENGINEERS HUNTINGTON, W. VA.			
DRAWN BY: REJ.		LICKING RIVER DILLON RESERVOIR PROJECT	
TRACED BY: L.L.F.		RELOCATION OF OHIO STATE ROUTE NO. 146 (Section 3)	
CHECKED BY: [Signature]		DATE: NOV. 1959	
SUBMITTED BY: [Signature]		APPROVED: [Signature] COL. C.E. DISTRICT ENGINEER	
RECOMMENDED: [Signature] CHIEF ENG. DIV.		ELMER S. BARRETT ASSOCIATES CONSULTING ENGINEERS CHILLICOTHE, OHIO	
SCALE: 1" = 50'		SPEC. NO. DRAWING NUMBER 027f-UD7- 68/92	
SHEET 92 OF 92			